

# Shining your invisible protein with unparalleled ECL

## SuperKine™ ECL substrate with High sensitivity and durability

The Western Blot HRP substrate series products are composed of peroxide reagent and luminol/enhancer, which are mixed and incubated with the blotting membrane, then film or imaging system can be used to detect the results. SuperKine™ enhanced/hypersensitive ECL substrates are based on the innovation and optimization of the classic peroxidase substrate system. Because of higher sensitivity and better stability, Abbkine ECL series products can save your expensive antibodies, efficiently present low-abundance protein expression, and reduce non-specific band interference. Even using after half of a year, it can still have a stable and ultra-sensitive performance. It is the best choice with excellent quality and affordable prices to meet your various experimental needs.



### Product advantages and features

**High sensitivity:** Extremely high sensitivity in the detection of pg-level and fg-level proteins;

**Strong stability:** Strong signal and sustainable for more than 4 hours;

**Easy to operate:** Two reagents premixed with equal volume, adding to the imprinting film for use;

**Strong compatibility:** PVDF membrane and NC membrane is also compatible. It can be exposed to both X-ray film and also suitable for chemiluminescence imager;

**Stable performance:** 4-8°C after storage for one year, there is no obvious difference in color rendering effect.

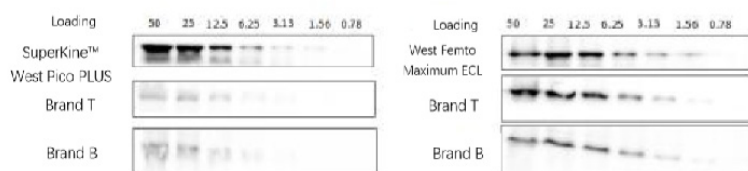


Fig. SuperKine™ ECL substrates are compared with same level's competitor brand by WB experiment, showing that SuperKine™ is more sensitive. Left: SuperKine™ West Pico PLUS Chemiluminescent Substrate, right: SuperKine™ West Femto Maximum Sensitivity Substrate (femto level).

The L929 cell sample was diluted 50 $\mu$ g times. Primary antibody: mouse anti-NF $\kappa$ B p65 monoclonal antibody (ABM0w017, 1: 5000); secondary antibody: goat anti-mouse IgG (A21010, 1: 10000); 60s exposure time, PVDF film; imaging system: chemiluminescence imager.

### Order Information

Cat. No.	Product name	Size
BMU101-EN	SuperKine™ West Pico PLUS Chemiluminescent Substrate	100 mL
BMU102-EN	SuperKine™ West Femto Maximum Sensitivity Substrate	100 mL

### Reference

- Structural Analysis of Rabies Virus Glycoprotein Reveals pH-Dependent Conformational Changes and Interactions with a Neutralizing Antibody. *Cell Host Microbe*. 2020 Mar 11;27(3):441-453.e7. (IF=10.5)
- NGF-Induced Nav1.7 Upregulation Contributes to Chronic Post-surgical Pain by Activating SGK1-Dependent Nedd4-2 Phosphorylation. *Mol Neurobiol*. 2021 Mar;58(3):964-982. (IF=8.4)
- Development of the photosynthetic apparatus of *Cunninghamia lanceolata* in light and darkness. *New Phytol*. 2017 Jan;213(1):300-313. (IF=7.17)
- Suppression of Calcineurin Enhances the Toxicity of Cry1Ac to *Helicoverpa armigera*. *Front Microbiol*. 2021 Feb 11;12:634619. (IF=6.4)
- Microglia induce the transformation of A1/A2 reactive astrocytes via the CXCR7/PI3K/Akt pathway in chronic post-surgical pain. *J Neuroinflammation*. 2020 Jul 14;17(1):211. (IF=5.79)



## The affiliated products that Abbkine provides with SuperKine™ ECL Substrate



We also develop and produce other ECL-related protein research tools for you, including ExKine™ protein extraction and purification, protein quantification kits, WB loading control antibodies and cocktail kits, popular secondary antibodies and other protein research related products.

Category	Cat. No.	Product Name	Size
ExKine™ Protein Extraction Kits	KTP3002	ExKine™ Nuclear Protein Extraction Kit	50T/200T
	KTP3006	ExKine™ Total Protein Extraction Kit	50T/200T
Protein Quantification	KTD3001	Protein Quantification Kit (BCA Assay)	500T/2000T/5000T
	KTD3002	Protein Quantification Kit (Bradford Assay)	500T/2000T/5000T
Loading Control Antibodies	A01010	Anti-β-Actin Mouse Monoclonal Antibody	50μl/200μl/200μl*5
	A01020	Anti-GAPDH Mouse Monoclonal Antibody	50μl/200μl/200μl*5
	A01030	Anti-β-Tubulin Mouse Monoclonal Antibody	50μl/200μl/200μl*5
Selected Primary Antibodies	ABP0059	Akt Polyclonal Antibody	100μl
	ABP0167	NFκB-p65 Polyclonal Antibody	100μl
Secondary Antibodies	A23710	Dylight 680, Goat Anti-Mouse IgG	100μl/500μl
	A23920	Dylight 800, Goat Anti-Rabbit IgG	100μl/500μl
	A21010	HRP, Goat Anti-Mouse IgG	100μl/500μl
	A21020	HRP, Goat Anti-Rabbit IgG	100μl/500μl

## Extraordinary SuperKine™ Enhanced Antibody Dilution Buffer and Hot Selling Western Blot Kit



### SuperKine™ Enhanced Antibody Dilution Buffer

Ready-to-use, no need to prepare, save antibodies; No protein components such as BSA, eliminate more interference, stronger signal-to-noise ratio; Compatible with PVDF membrane and NC membrane, and compatible with HRP/AP and other chromogenic substrates; Can be used in various of The dilution of primary antibody or secondary antibody is used in WB, IF, IHC, ELISA and other immunological experiments.

Cat. No. BMU103-EN

Size: 100 mL



### Universal Loading Control Antibody Cocktail

The kit contains GAPDH, β-Actin and β-Tubulin, the three most commonly used internal reference antibodies, which can be used for the detection of human, mouse, and rat samples. It also provides a ready-to-use animal cell total protein WB positive control and immediate SuperKine™ enhanced antibody diluent for use. Compared with purchasing three internal control antibodies and enhanced antibody diluents separately, this kit is extremely cost-effective.

Cat. No. KTD101-EN

Size: 1 Kit

## Abbkine Scientific Ltd

As the world's unique cell and protein product portfolio supplier, we provide basic tools and solutions in the fields of protein extraction and purification, immunoassays, cell culture separation, and metabolic analysis. Abbkine is committed to customer's success and excellence.

For more information, please visit Abbkine Scientific: <https://www.abbkine.com>

Tel: +86-27-59716789 | Fax: +86-27-59716788 | Email: [service@abbkine.com](mailto:service@abbkine.com)



The product listed herein is for research use only and is not intended for use in human or clinical diagnosis.